

788/1

236

240/1

235/1

788/10

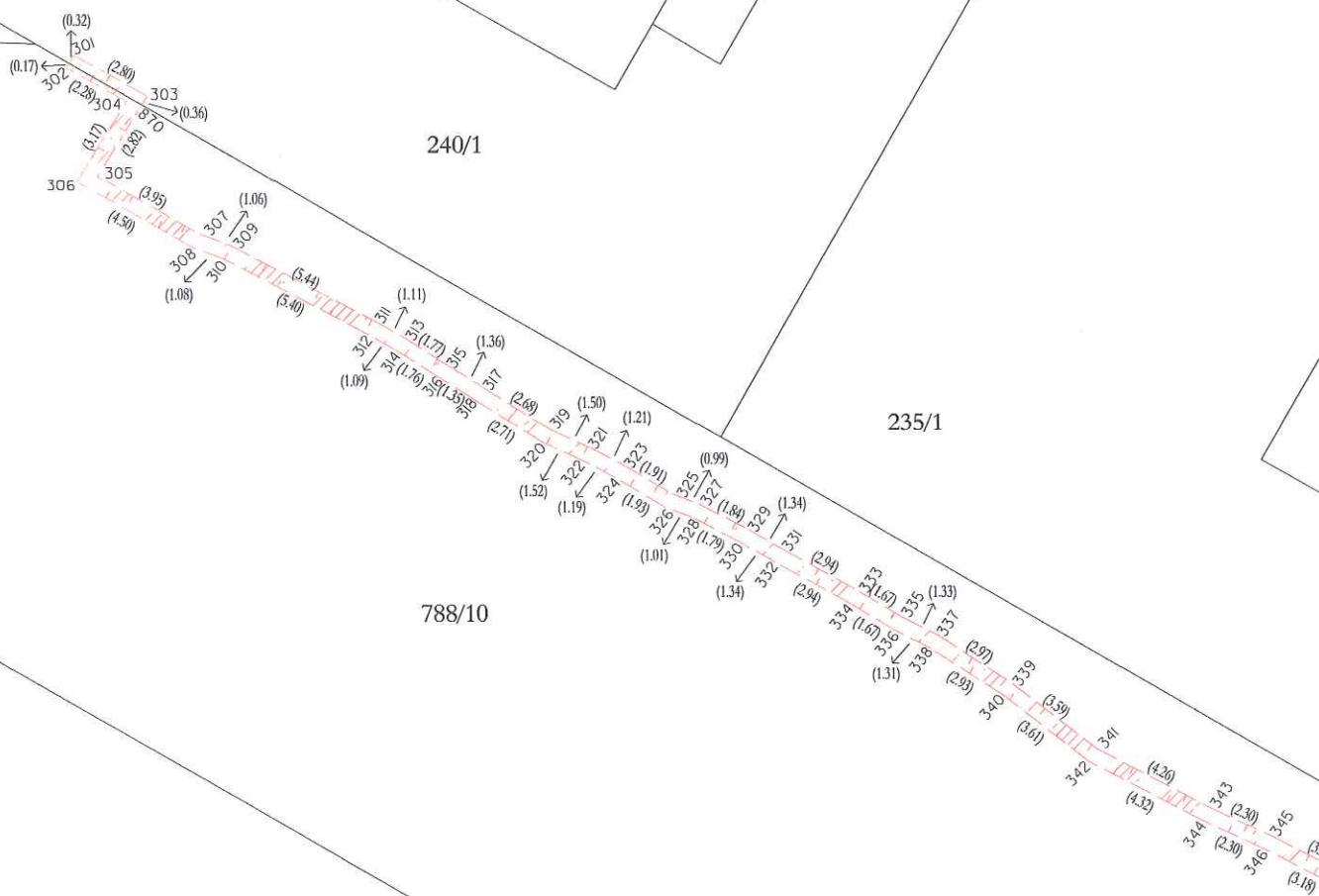
241

255/1

242

243

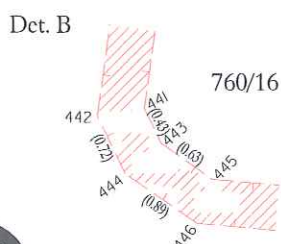
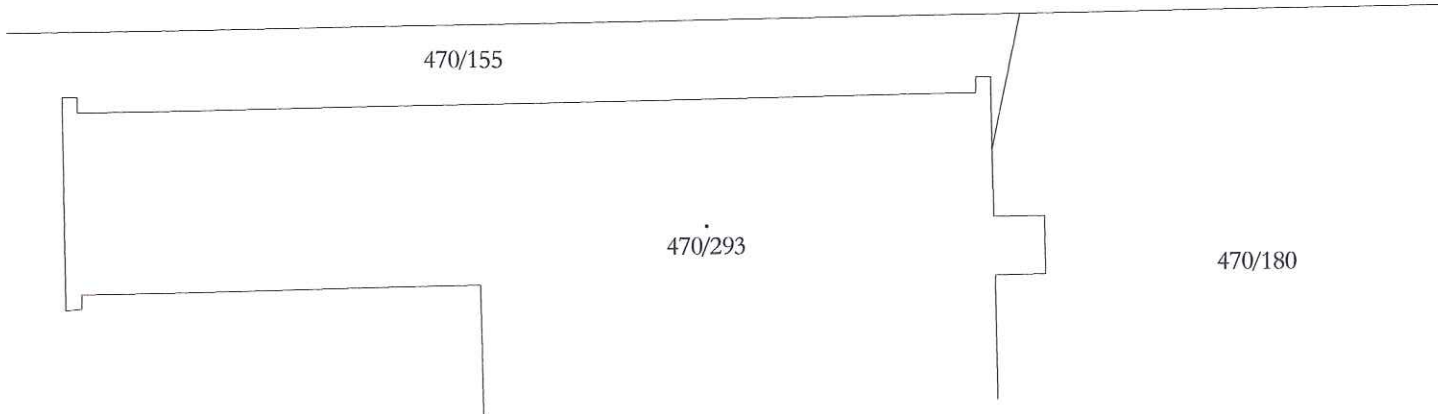
A







C



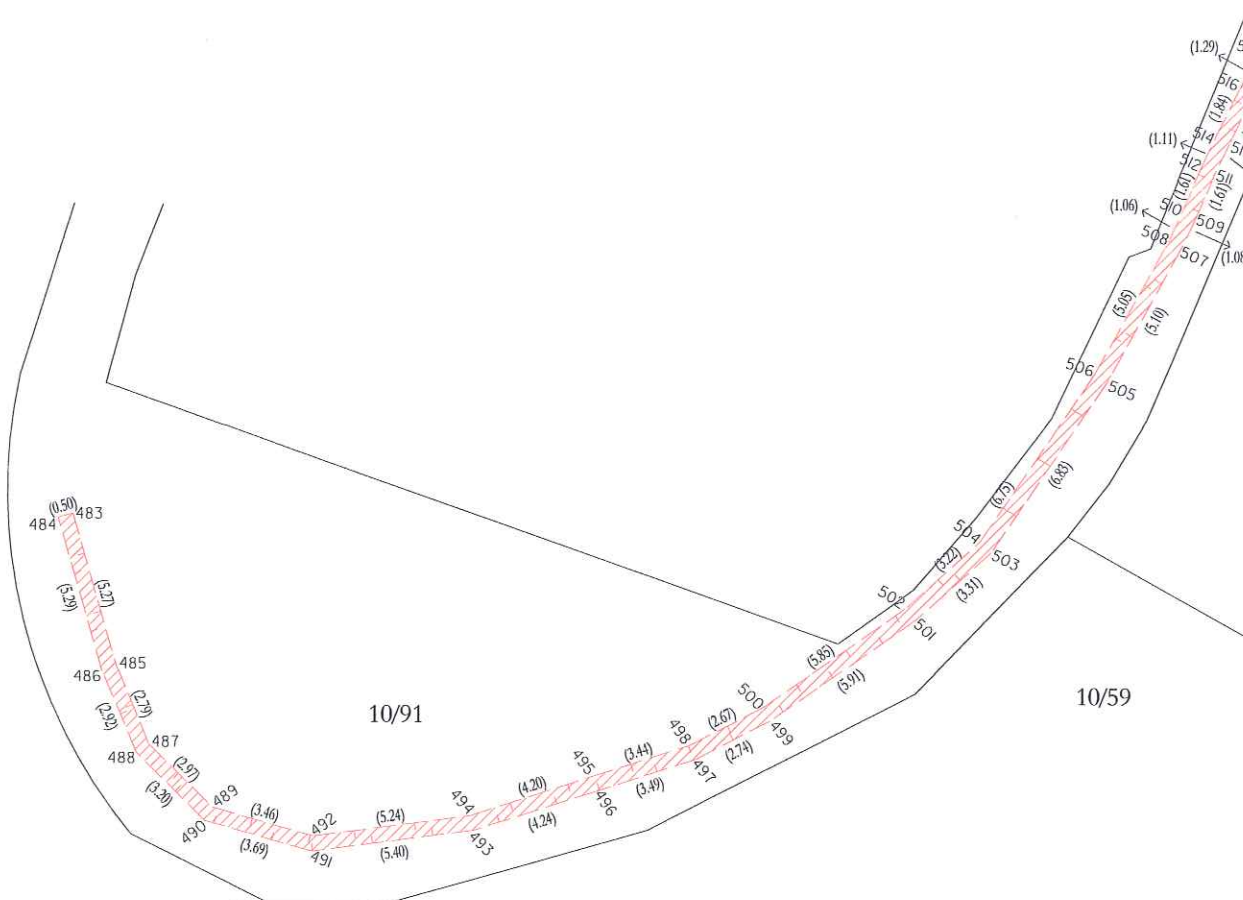
10/65

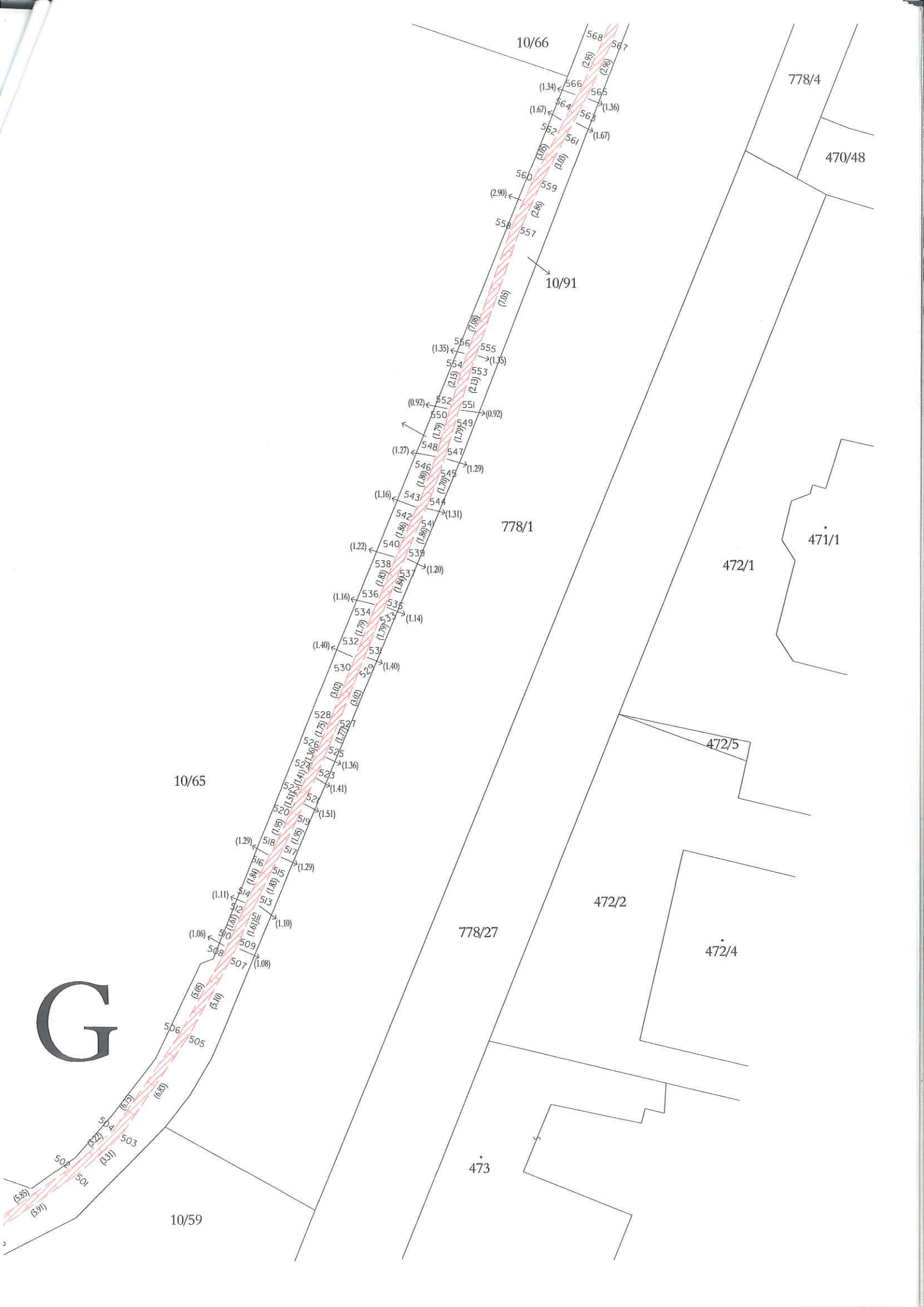
10/106

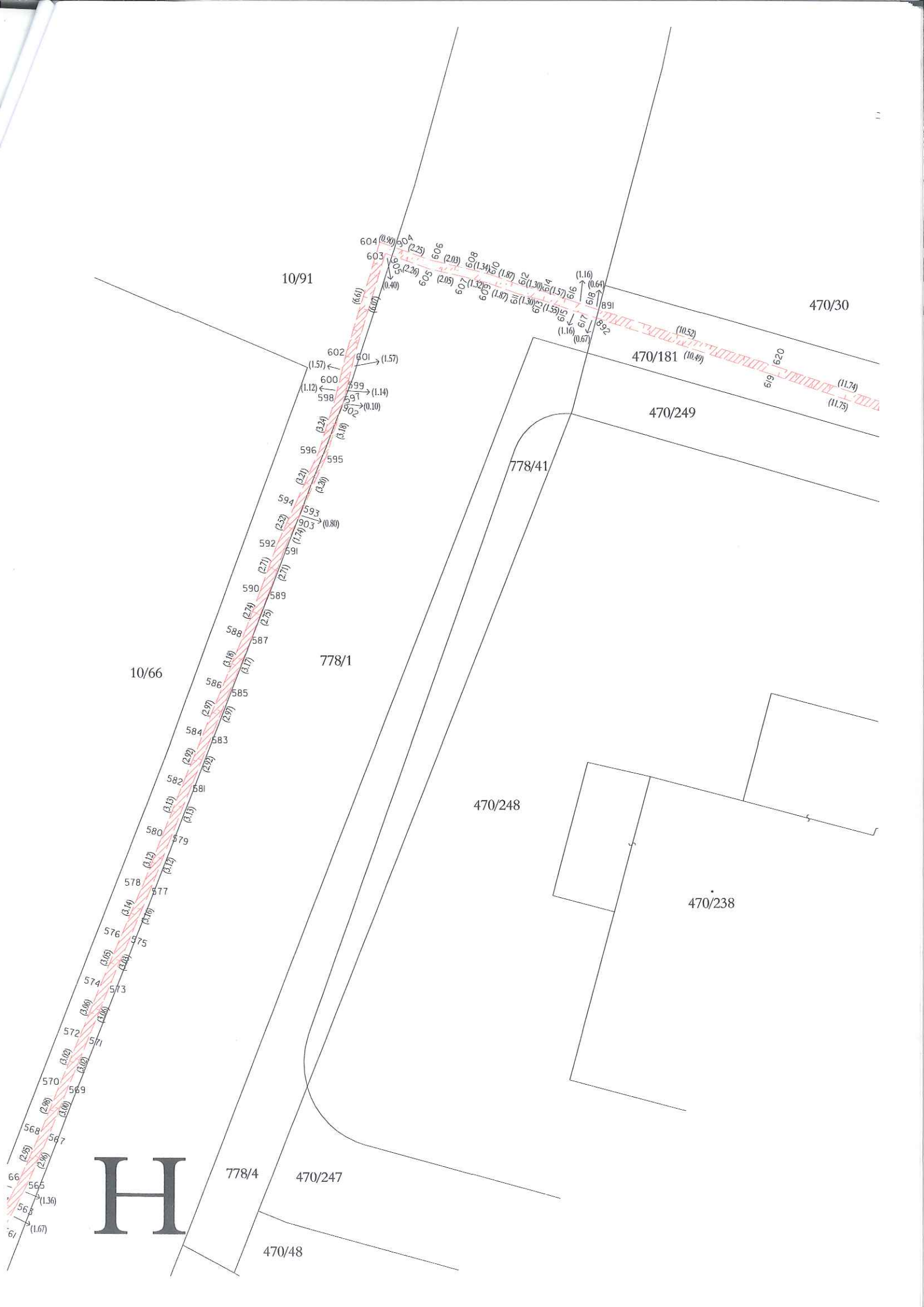
10/91

10/59

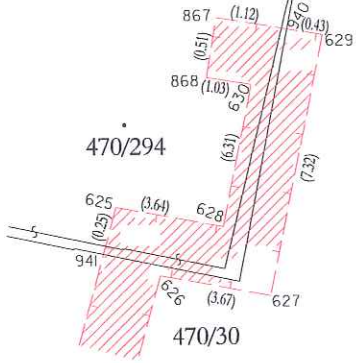
F







Det. C



470/297

470/294

470/30

470/30

470/294

470/298

Det. C

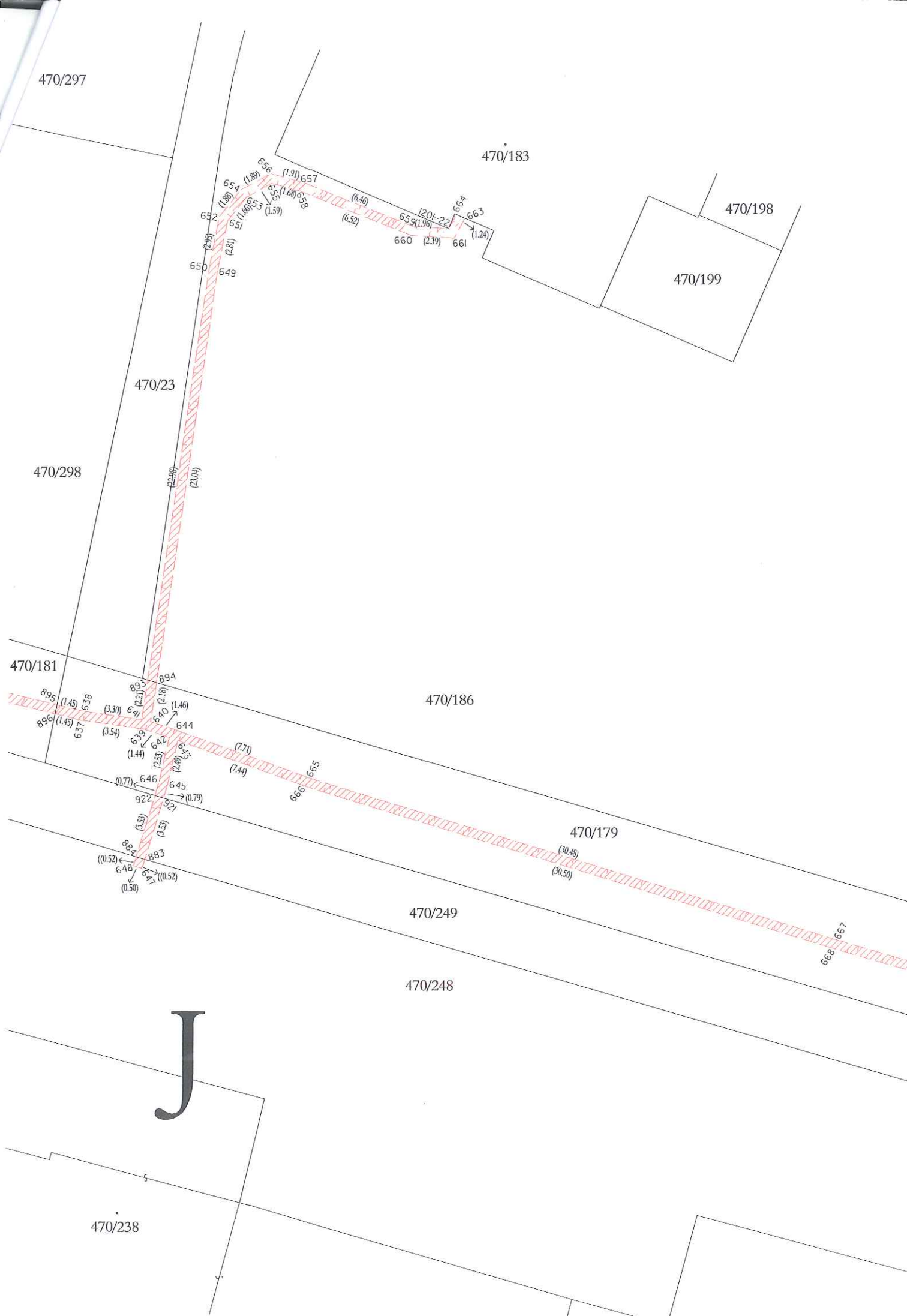
470/249

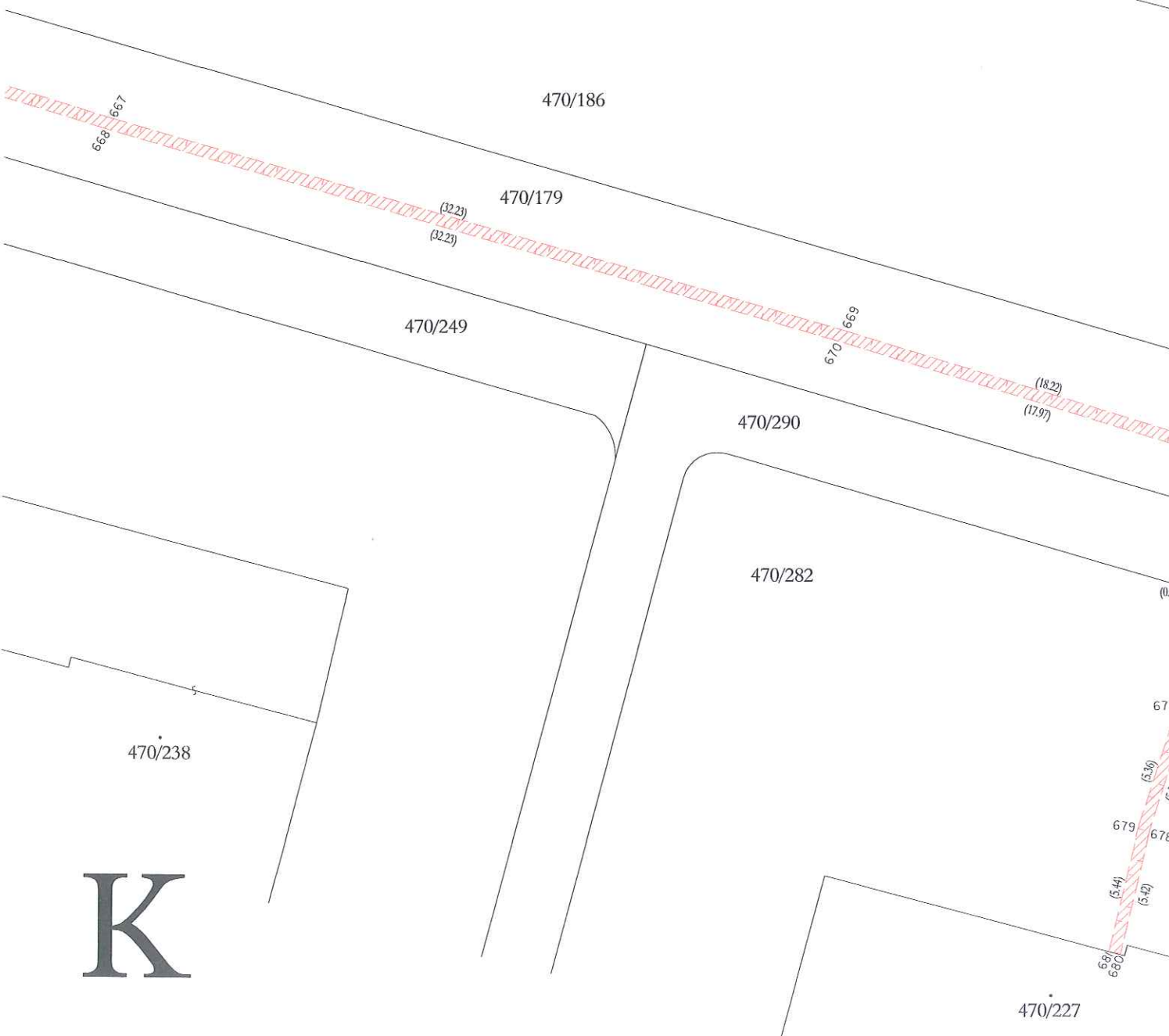
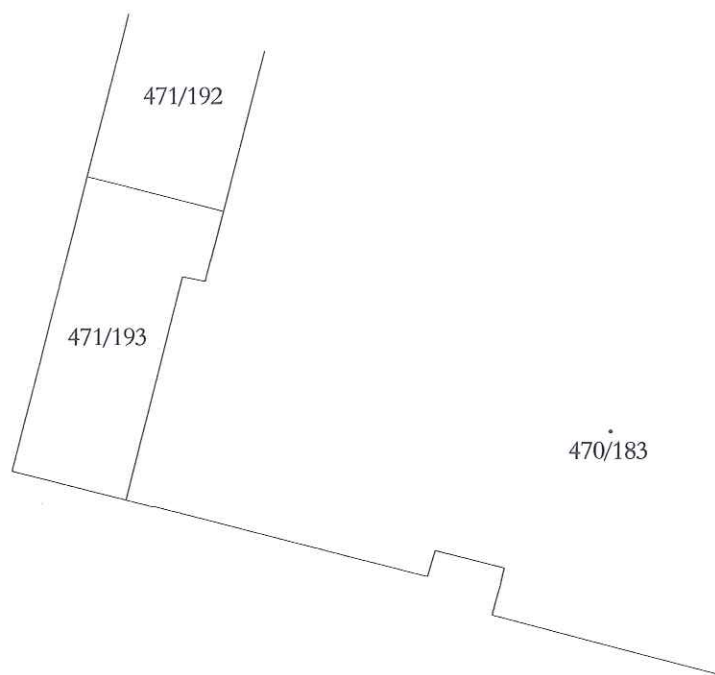
470/181

470/248

470/238

I





K



470/183

470/186

470/226

470/179

470/290

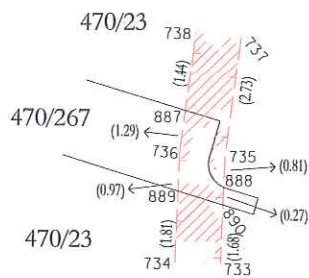
470/282

470/227

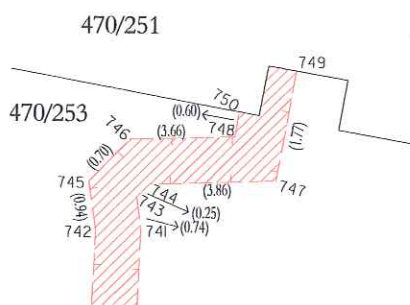
470/227

L

Det. D



Det. E



Det. E

Det. D

470/186

470/183

M

470/226

470/251

470/253

470/266

470/23

470/221

470/222

470/223

470/224

470/225

470/93

696 695

698

697

702

701

700

699

704

703

706

705

708

707

710

709

712

711

714

713

716

715

720

718

717

724

723

722

721

726

725

727

728

730

732

734

736

738

740

742

744

746

748

750

470/157

470/164

470/226

470/167

470/179

470/290

470/282

470/292

470/277

470/20

470/280

N

752
751

(19.68)
(19.41)

753

754

757

759

758

761

760

763

762

765

764

767

766

769

768

771

770

773

772

775

774

(22.12)
(21.63)

(0.48)

(0.12)

(3.47)

(3.36)

(3.15)

(3.14)

(3.01)

(2.99)

(2.90)

(2.85)

(2.61)

(2.61)

(3.33)

(3.40)

(3.17)

(3.18)

(2.47)

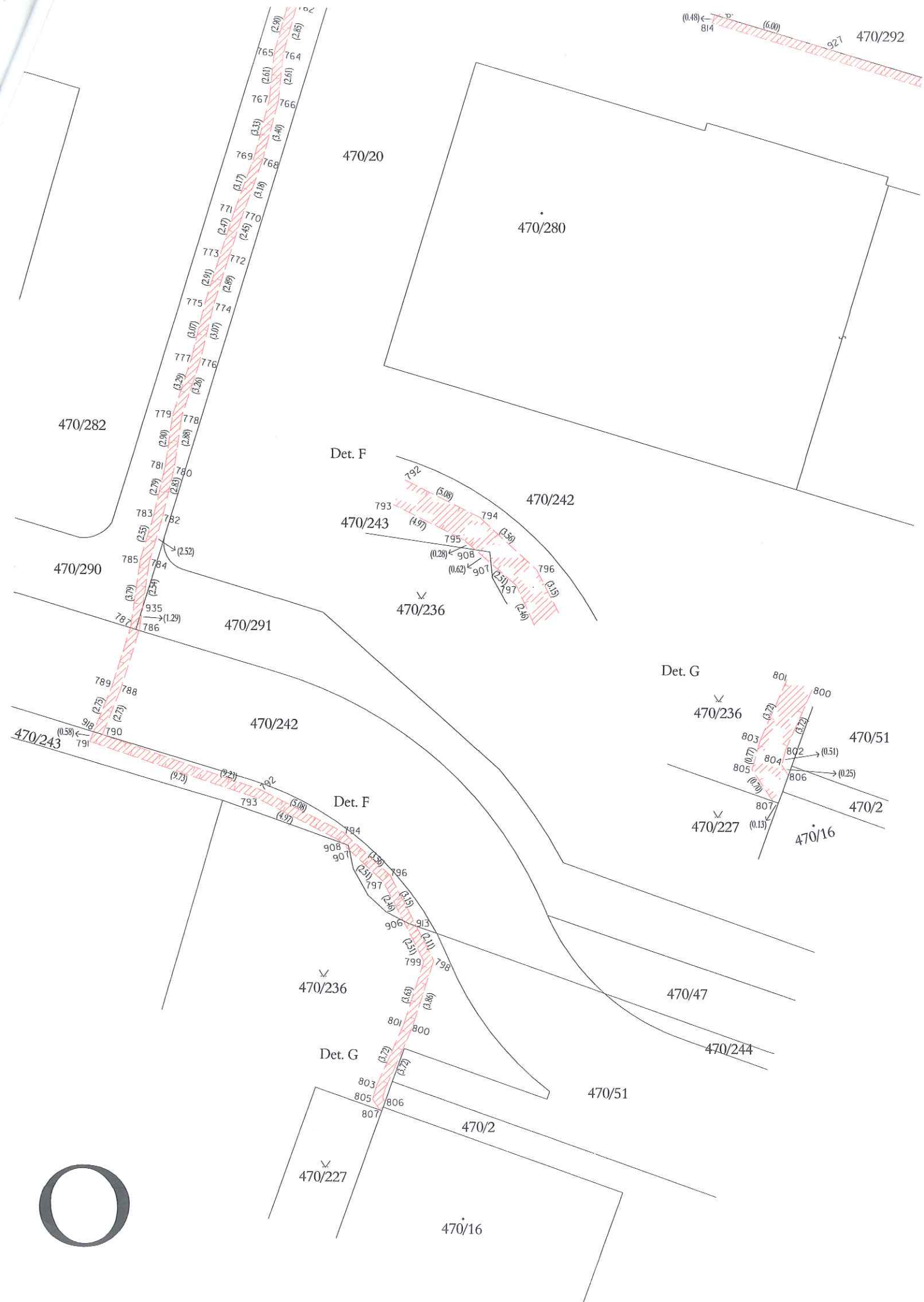
(2.45)

(2.91)

(2.89)

(3.07)

(3.07)



470/157

470/162

470/163

(34.13)
(34.11)

470/167

834 833

(15.61)
(15.67)

470/179

471/1

470/292

Det. H

470/20

470/280

470/280

Det. H

(0.13) (0.39) (0.46)
815 928 816 929 817 (0.14)
820 (0.42) 818 (0.43) 819

(0.16) 835 831 (0.11)
897 898
(0.87) (3.42) (3.21) (1.77)
808 809 810 811 812 813 827 (1.25) 830
(0.53) 926 (0.55) (3.46) (3.48)
930 814 (0.48) (6.00)

(27.12) (20.54)

815 816 817
820 818

(14.70)
(14.89)

(1.11)
821 822
(0.64) 824 823
(5.40) (5.98)
826 825

P

470/167

470/158

470/167

848 847

846 (2.81) 843
845 (2.76) 844
(0.50) ←

842 841

840 839

470/157

471/1

470/159

836 835

470/160

470/167

470/161

470/162

Q

470

90

865

866

470/91

470/95
470/96

470/96

470/124	470/125	470/126
---------	---------	---------

470/125

470/126

470/93

470/94

Figure 1 is a plan view map showing a road layout. A main road runs vertically, with a side road branching off to the left. The main road has a width of 10.75m. The side road has a width of 1.46m. The main road is divided into three sections: the top section is 8.51m wide, the middle section is 8.49m wide, and the bottom section is 9.01m wide. The side road is 8.52m wide. The road is marked with a center line and edge lines. The area to the right of the road is labeled 470/167.

470/167

470/158

R